

Anlage der Begründung

Vorhaben- und Erschließungsplan

**gem. § 12 (3) BauGB als Bestandteil des
Bebauungsplans**

Stand September 2020

gefertigt durch:

Mattes Ringlewski Wahl Architekten

Vorhabenträger:

Weingärtner Cleebrohn Güglingen eG.
STORZ Weinkellerei GmbH
Weingut Holzwarth
Weingut Ranspacher Hof



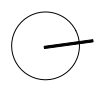
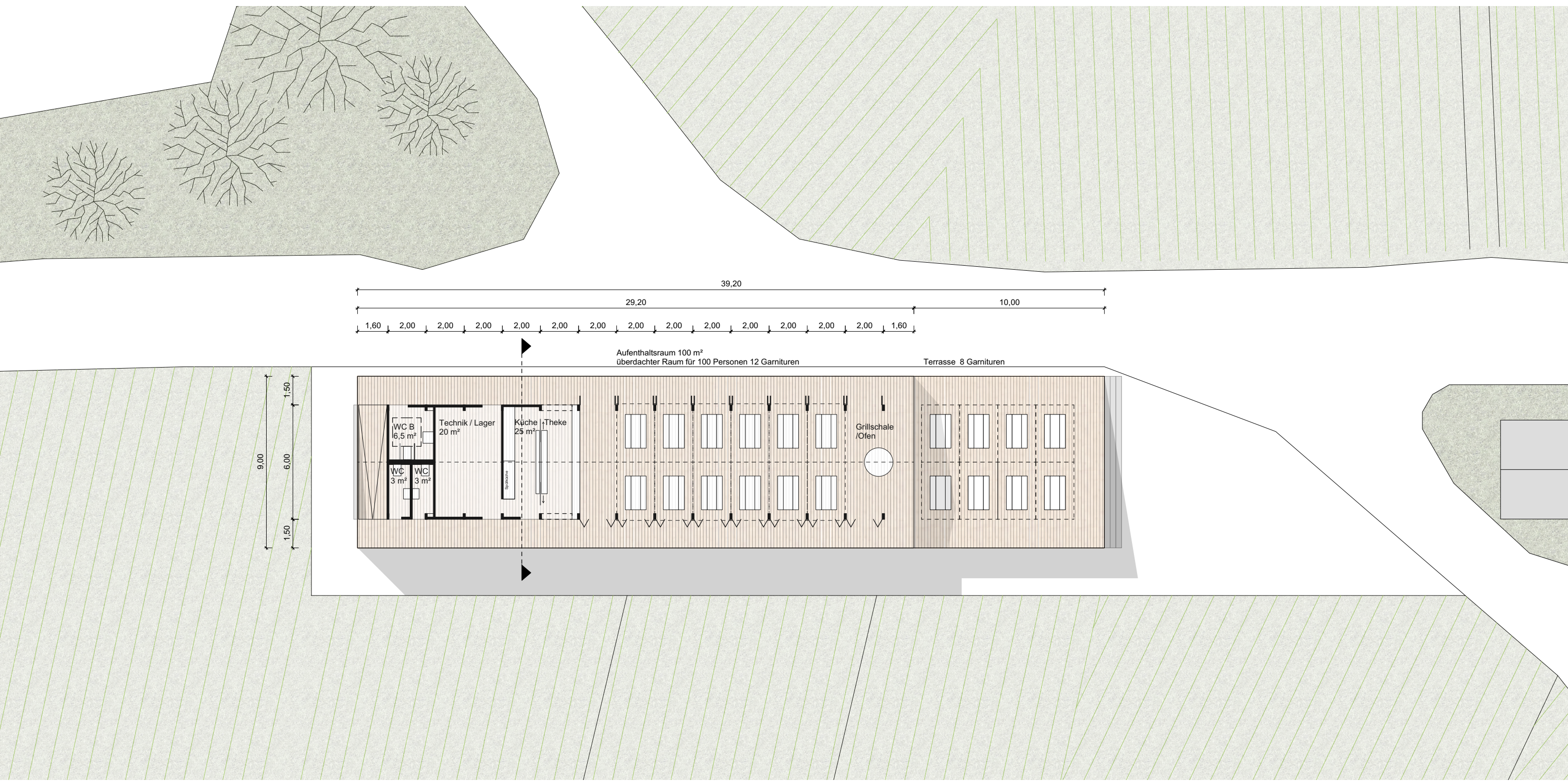


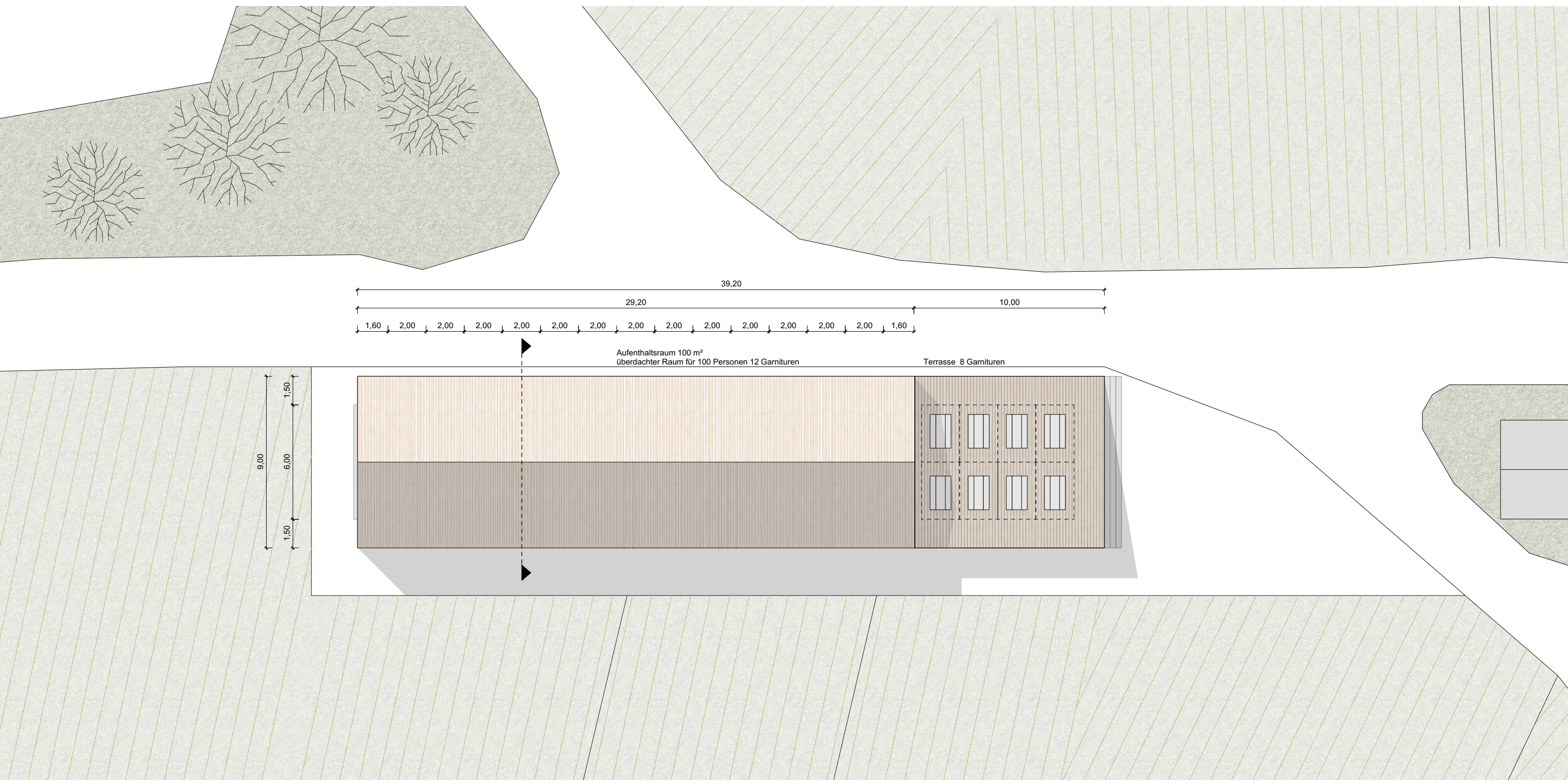


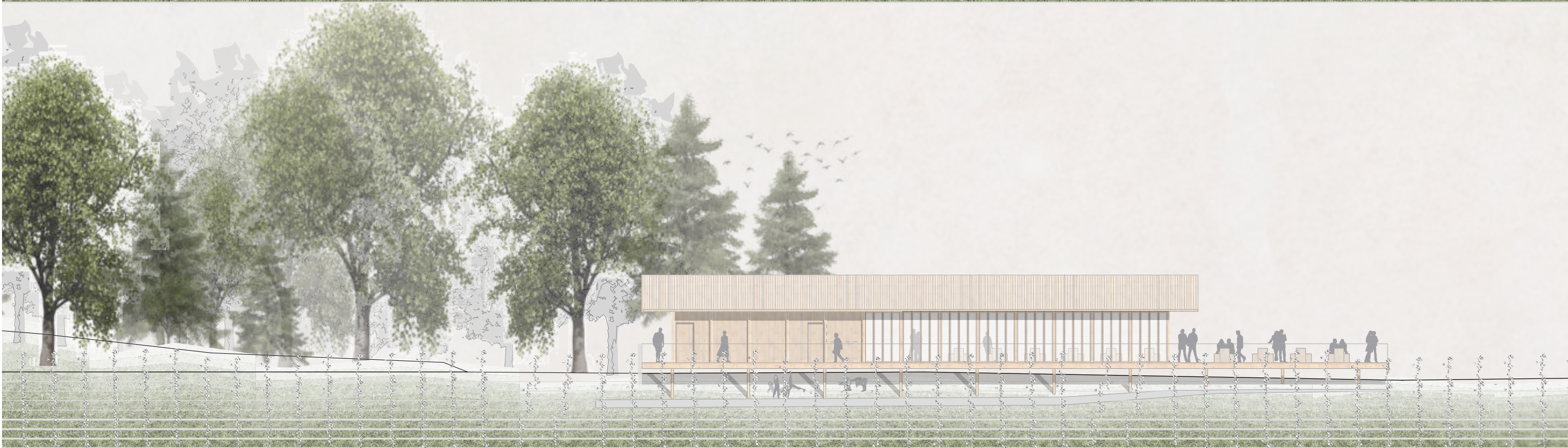


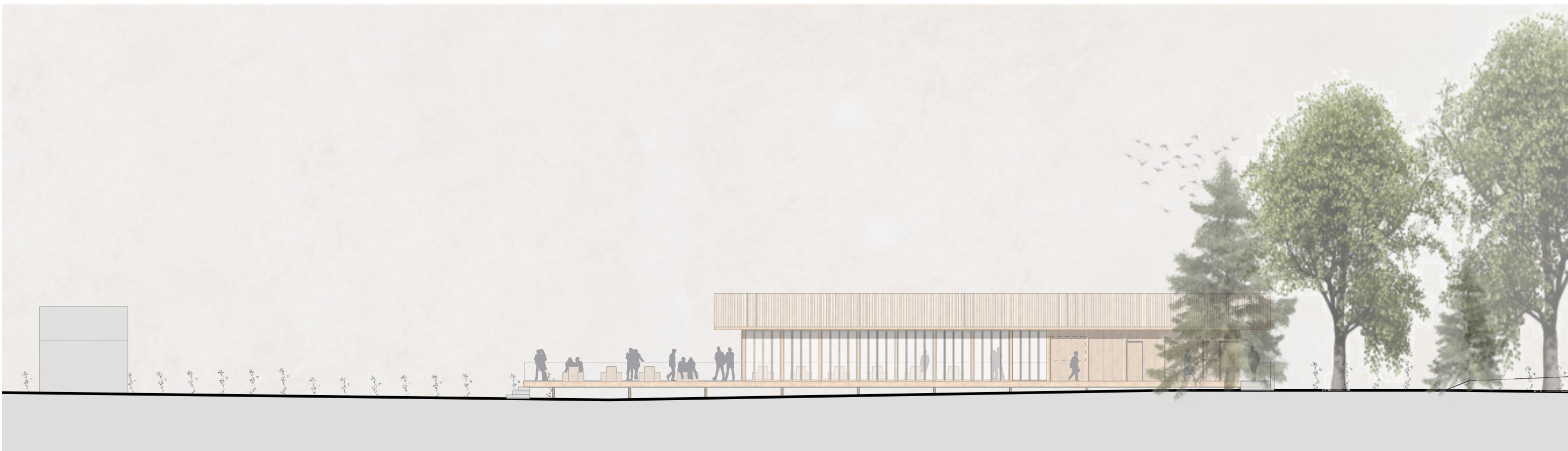
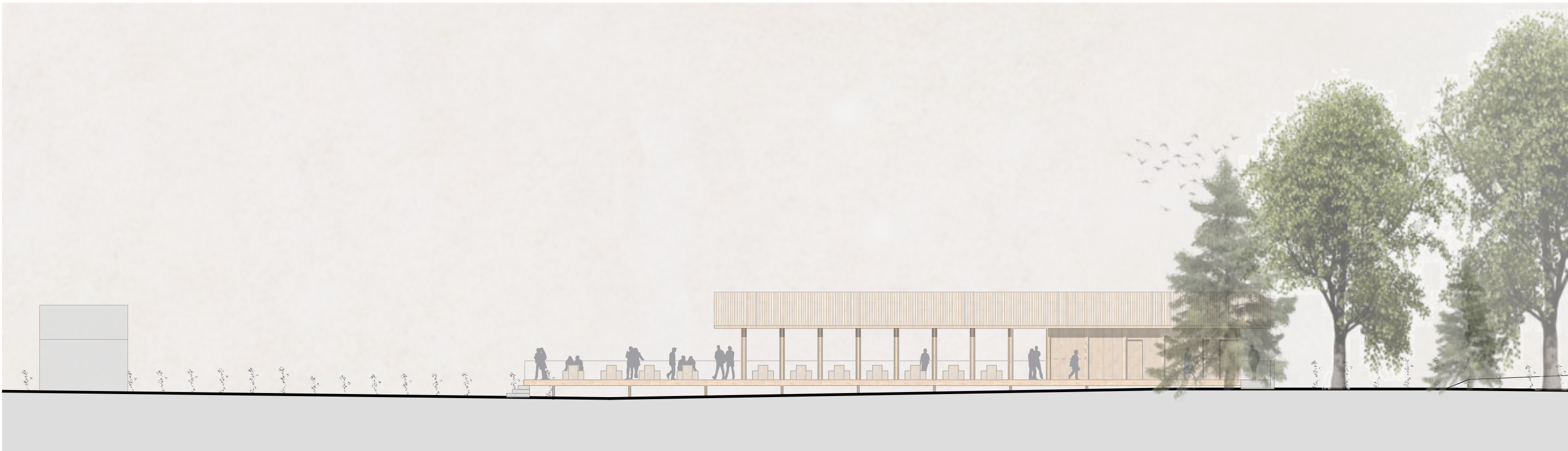


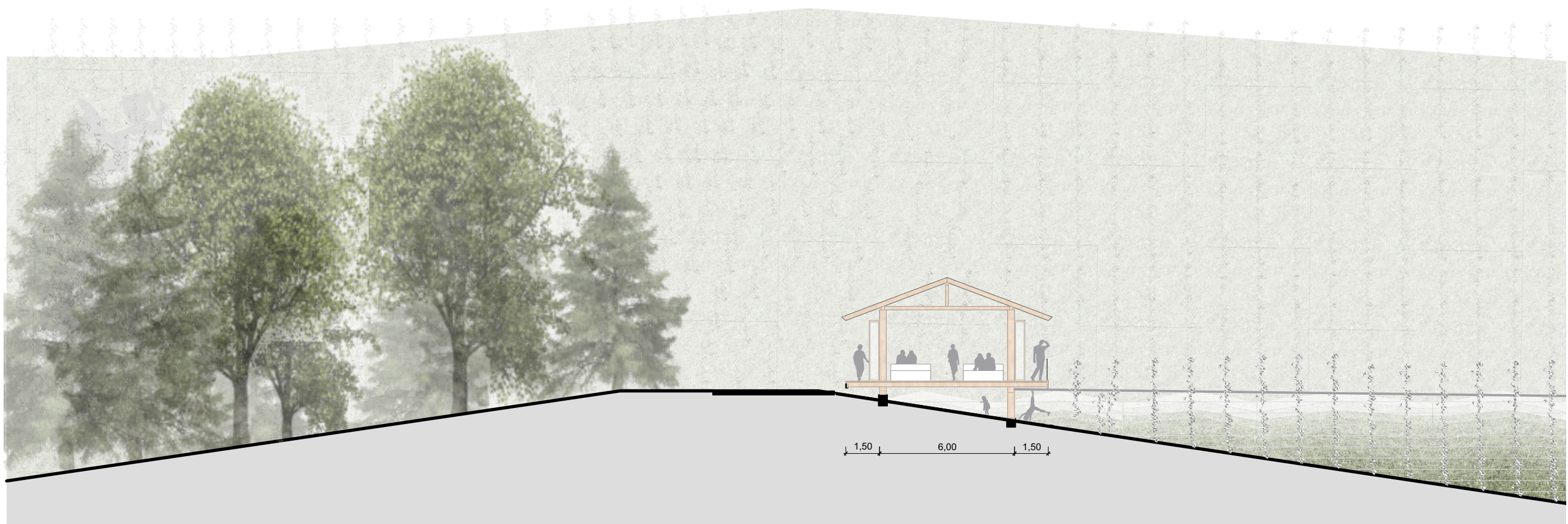
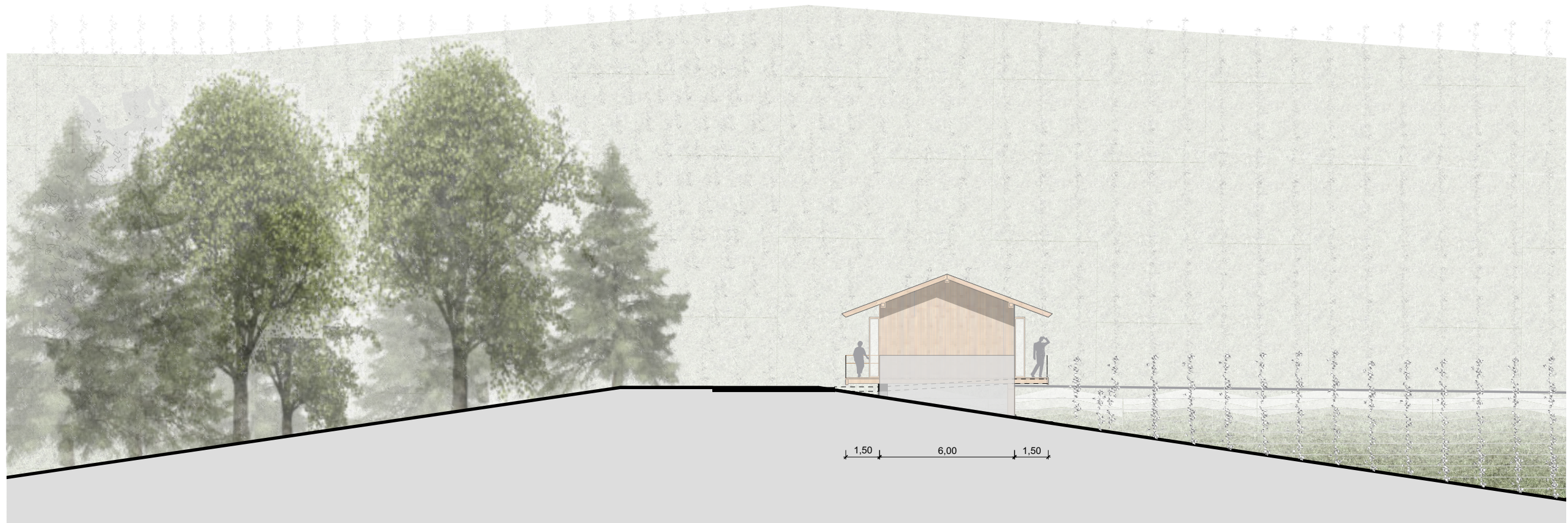


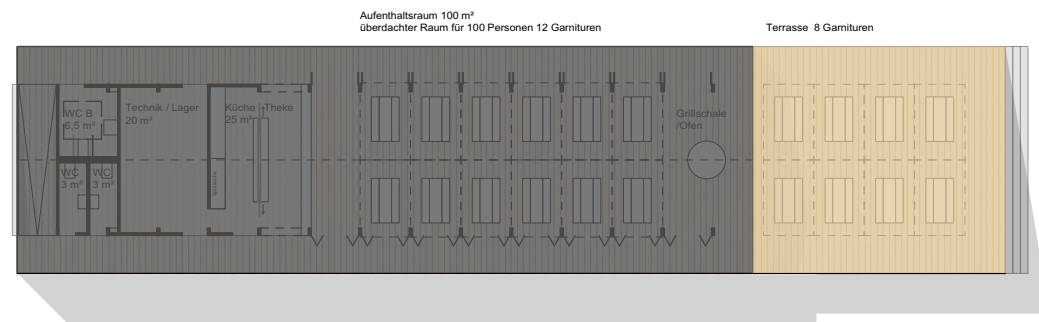




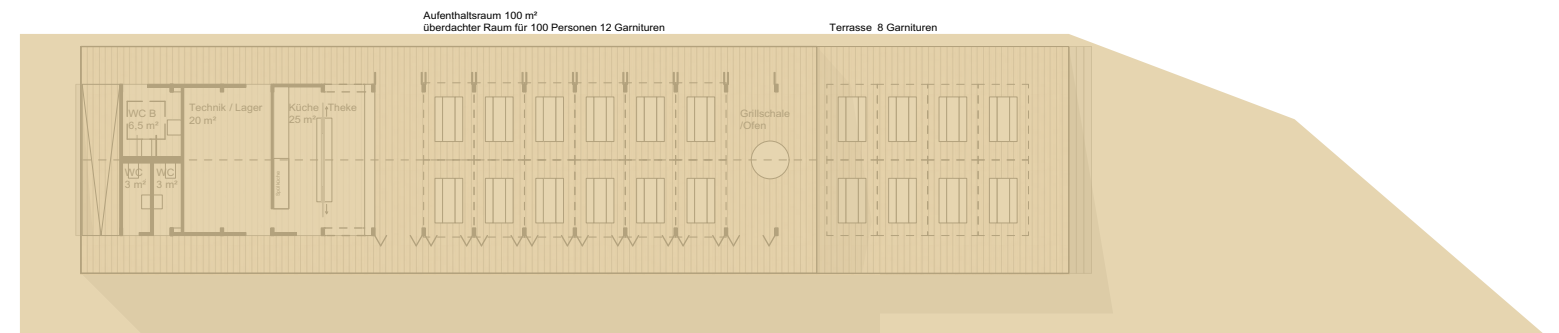




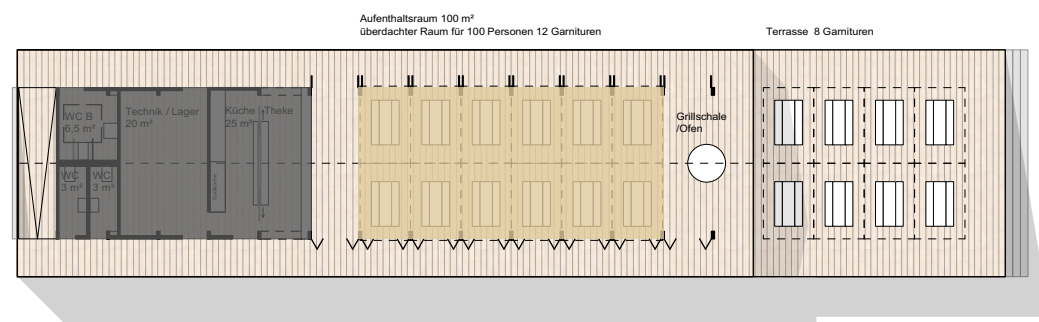




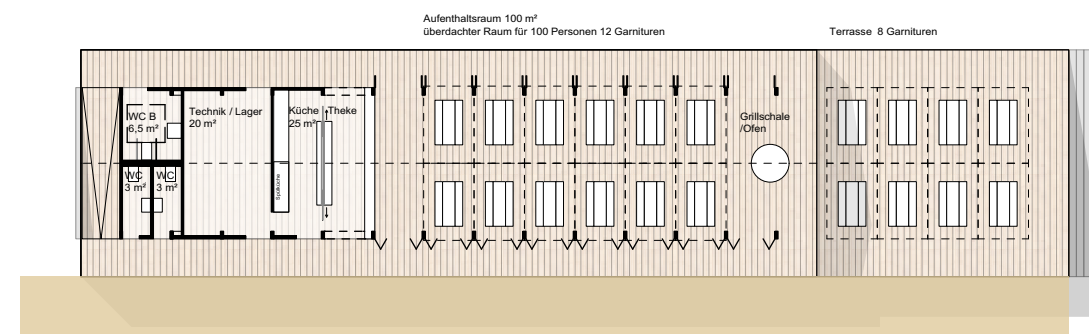
263 m² 90 m²
Überdachte Fläche Nichtüberdachte Terrasse



635 m²
Grundstücksfläche



60m² 73 m²
Geschlossener Raum Windgeschützte Fläche



104 m²
Durchwegung

